

## Double Leaf EI<sub>2</sub>60 / T60 High Fire Retardant Air Tight Steel Door

<b>Fire Protection</b>	<b>EI<sub>2</sub>60 / T60</b>	<b>tested acc. to EN 1634-1</b>
<b>Smoke Control (optional)</b>	<b>S<sub>a</sub>, S<sub>200</sub> / RS</b>	<b>tested acc. to EN 1634-3</b>
<b>Self-Closing (optional)</b>	<b>up to C5</b>	<b>tested acc. to EN 1191</b>
<b>Air Tight</b>	<b>class 3</b>	<b>tested acc. to EN 1026</b>

**Certified in accordance with DIN EN 16034 / 14351-1 / 13241**  
**General Building Approval as T60-2 (-RS) -FSA acc. to DIN 4102-5 / DIN 18095**

### Optional Audited Additional Functions

- Sound Insulation	up to R <sub>w,P</sub> 54 dB	tested acc. to EN ISO 10140-2
- Burglar Protection	RC2/RC3/RC4/RC5	tested acc. to EN 1627
- Bullet Resistance	FB4/FB6	tested acc. to EN 1522
- Rain- and Fire-Water Tight	class 6A	tested acc. to EN 1027
- Wind load Resistance	up to class C5	tested acc. to EN 1221
- Blast Resistance	up to 20 kPa	tested acc. to EN 13124-1
- Explosion Protection	up to zone 1/21	acc. to EN 1127-1 or ATEX 2014/34/EU
- Stainless Steel		

### Range of Dimension

<b>Range of Dimension for Doors</b>	<b>Width</b> from 1375 mm to 3000 mm
	<b>Height</b> from 1750 mm to 3000 mm
<b>Range of Dimension for Hatches</b>	<b>Width</b> from 1000 mm to 1375 mm
	<b>Height</b> from 500 mm to 1750 mm

### Technical Specification and Tender Text

<b>Product:</b>	<b>EI<sub>2</sub>60 / T60 double leaf fire retardant and air tight steel door brand Buchele tested acc. to EN 1634-1</b>
<b>Door Type:</b>	<b>PLANE Line PL 602 BASIC</b>
<b>Air Tight:</b>	<b>class 3</b>
<b>Structural Opening:</b>	<b>.... x .... mm</b>
<b>Door Leaf:</b>	Double-walled, planar 70 mm thick steel door leaf without hinge embossing, three sides rebated with thick rebate. Without bottom stop. Special insulating inserts fully laid-in and glued. Passive leaf with multi-chamber sealing profile in the middle rebate. Securing pin screwed in door leaf rebate. Drop seal system. Passive leaf with multi-chamber sealing profile in the middle rebate.
<b>Threshold:</b>	Floor bracket as separation sill. Surface galvanized and welded to the frame.
<b>Frame:</b>	3-sided circumferential rebated corner frame with visible black coated intumescent material in rebate. High-quality multi chamber sealing profile adjustable fixed in the three-sided groove.

<b>Hinges:</b>	Three-part, height adjustable construction hinges with hinge pin retention and ball bearing spacer ring for smooth door movement.								
<b>Door Closer:</b>	2 pieces door closer system with standard arm acc. to EN 1154 silver coloured mounted on hinge side. Door coordinator and 2 pieces of 30 mm high brackets with plastic roller.								
<b>Fitting:</b>	<b>Active leaf</b> with mortise lock with latch lever function acc. to EN 12209 (prepared for installation of a profile cylinder lock, provided by customer). Door handle set in acc. to EN 1906 fixed pivoted synthetic material black in U-shape with rounded short-plate. <b>Passive leaf</b> with self-locking concealed shoot bolt lock with upper switch lock.								
<b>Surface:</b>	Door leaf and frame galvanized und primed with 2K-PUR primer (Very High Solid) similar RAL 7035.								
<b>Installation:</b>	<table border="0"> <tr> <td>masonry</td> <td>≥ 115 mm</td> </tr> <tr> <td>concrete</td> <td>≥ 100 mm</td> </tr> <tr> <td>areated concrete</td> <td>≥ 200 mm</td> </tr> <tr> <td>mounting wall F60</td> <td>≥ 125 mm</td> </tr> </table>	masonry	≥ 115 mm	concrete	≥ 100 mm	areated concrete	≥ 200 mm	mounting wall F60	≥ 125 mm
masonry	≥ 115 mm								
concrete	≥ 100 mm								
areated concrete	≥ 200 mm								
mounting wall F60	≥ 125 mm								

### Alternative: PLANE Line PL 602 PREMIUM with flush mounted optics

<b>Frame:</b>	3-sided circumferential rebated PLANE Line special corner frame for flush mounted optics on hinge side. With visible, black coated intumescent material in rebate. High-quality multi-chamber sealing profile adjustable fixed in the three-sided groove.
<b>Hinges:</b>	Object hinges type VB-3D 160 adjustable in three dimensions. Fixture element with slide bearings inside for smooth door movement.
<b>Door Closer:</b>	Slide rail door closer system acc. to EN 1154 silver coloured mounted on hinge side.

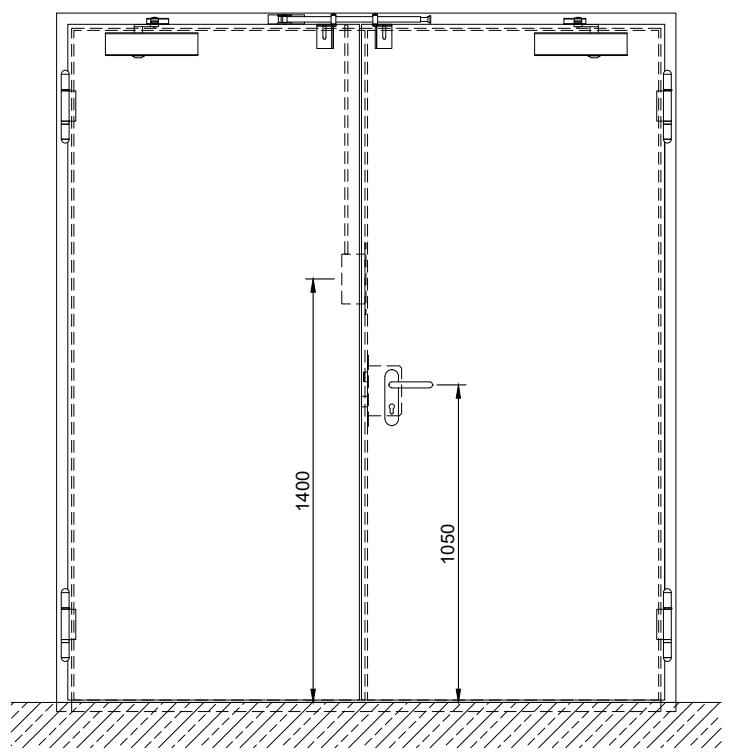
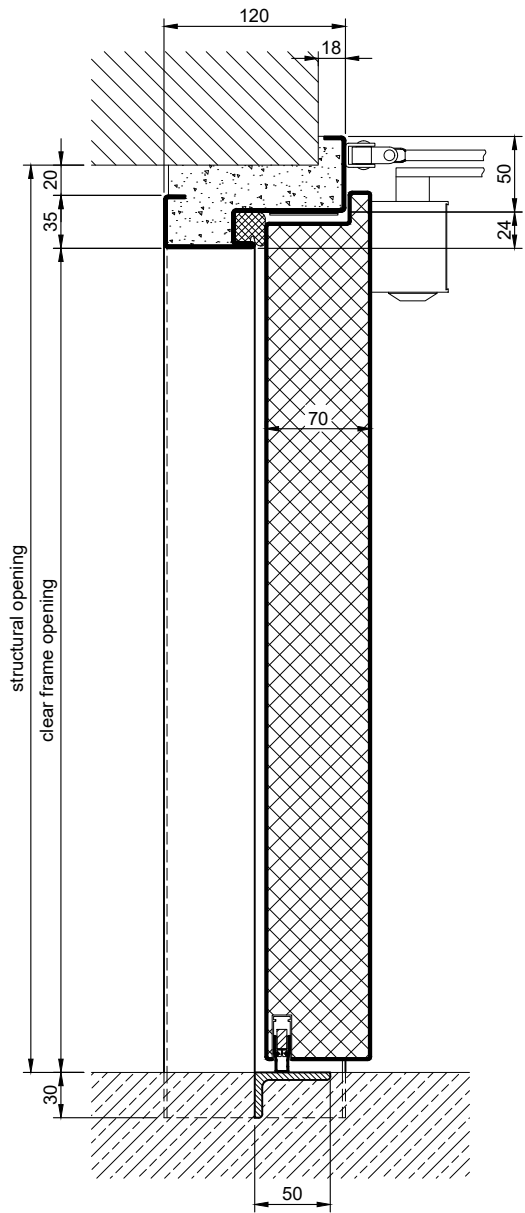
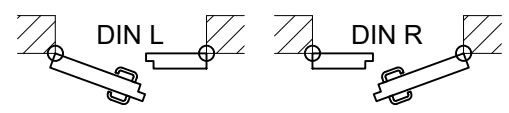
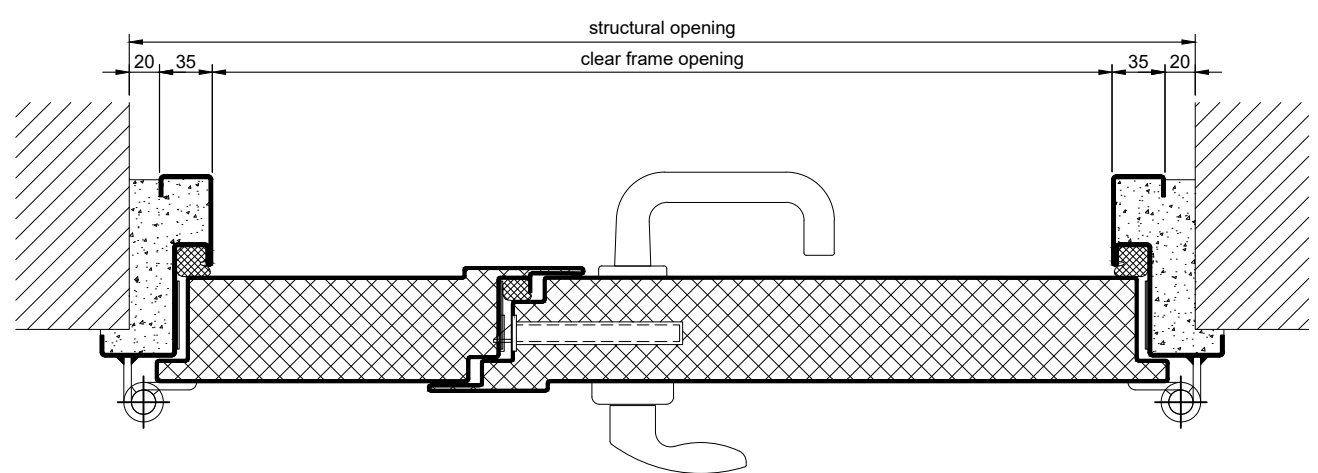
### Alternative: PLANE Line PL 602 SUPERIOR with flush mounted optics

<b>Frame:</b>	3-sided circumferential rebated PLANE Line special corner frame for flush mounted optics on hinge side. With visible, black coated intumescent material in rebate. High-quality multi-chamber sealing profile adjustable fixed in the three-sided groove.
<b>Hinges:</b>	Concealed hinge system adjustable in three dimensions.
<b>Door Closer:</b>	Concealed slide rail door closer system acc. to EN 1154 integrated in frame and door leaf.

### Supplementary Equipment

<b>Glazing:</b>	F60 fire-protective glazing fixed with profiled and visible screwed steel glazing bars. Minimum border 125 mm on side and top, base 300 mm.
<b>Stainless Steel:</b>	Material 1.4301 (V2A) or 1.4404 (V4A), Surface mill finish or brushed.
<b>BUCHELE DELUXE:</b>	The exclusive surface coating.

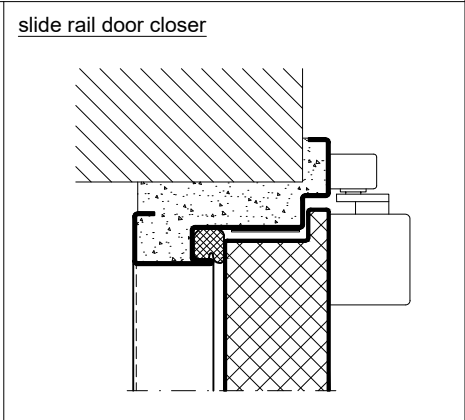
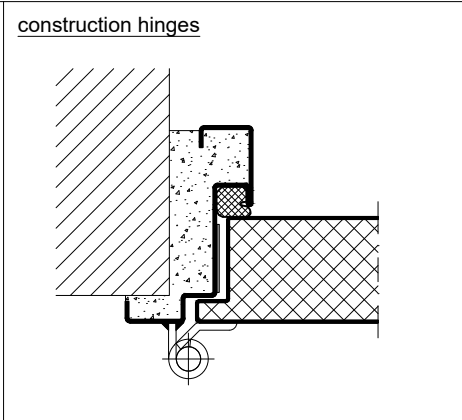
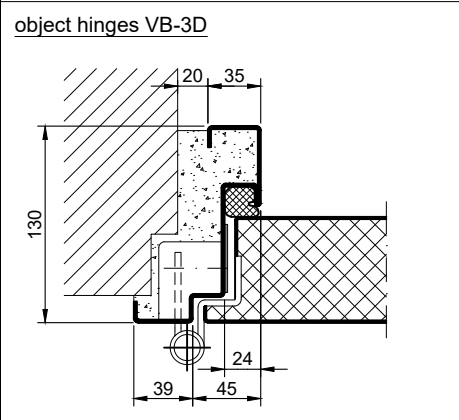
### BASIC - Version



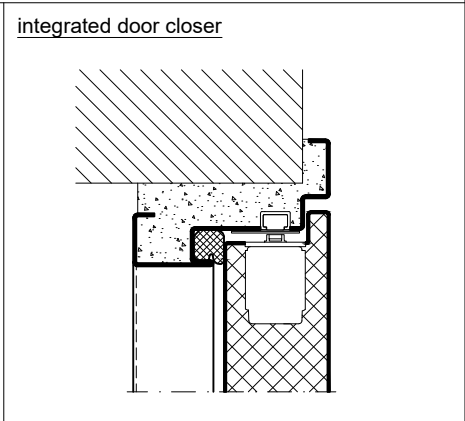
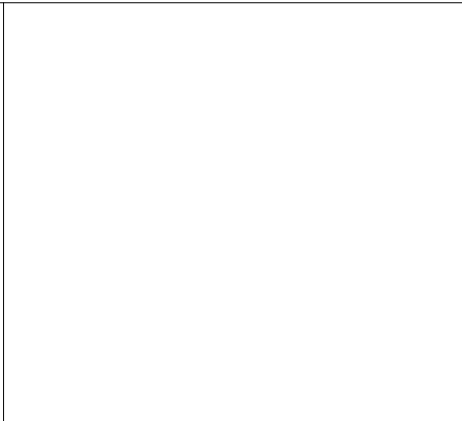
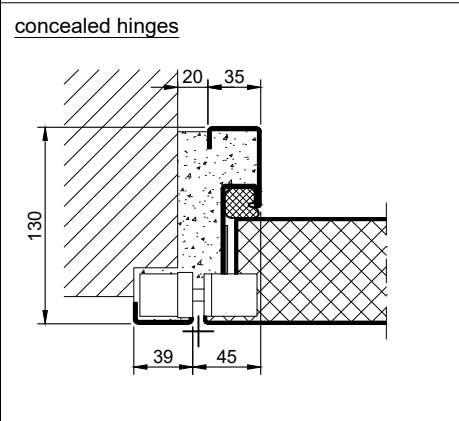
1.34.2\_PLANE LINE PL 602 LD3\_EN

technical modifications reserved - edition 05/2024

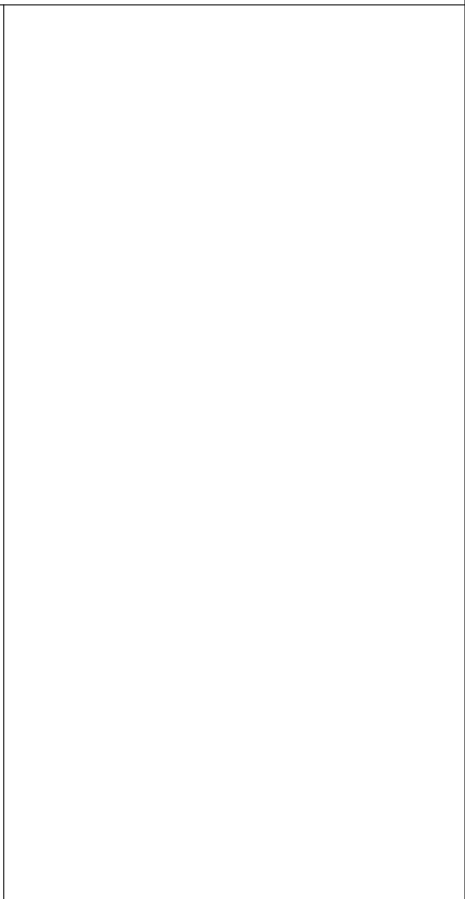
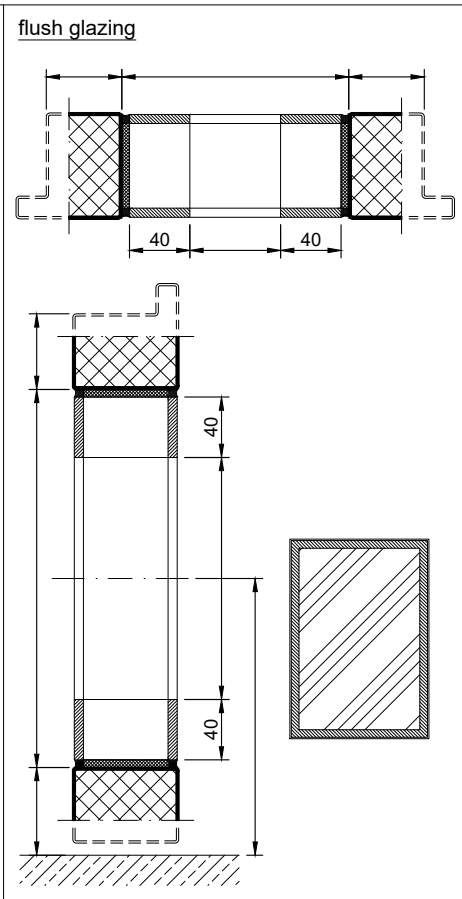
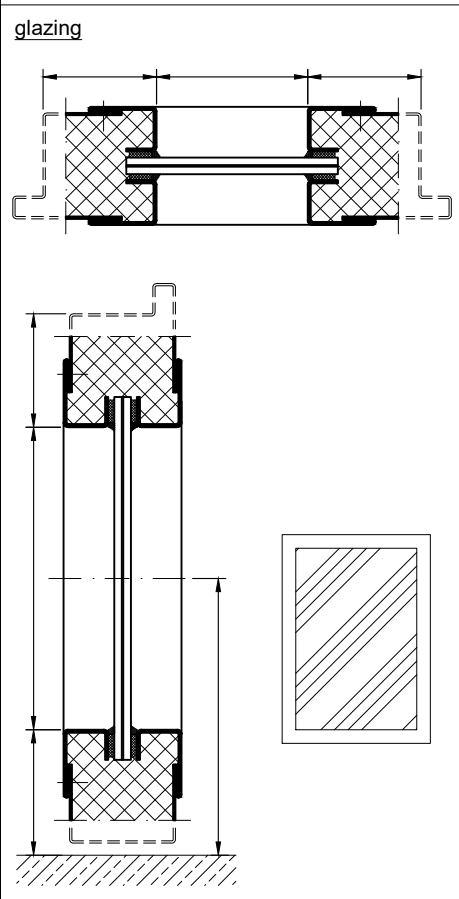
### PREMIUM - Version



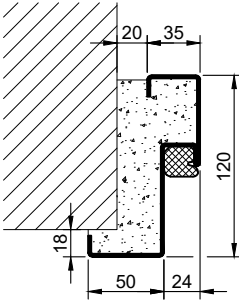
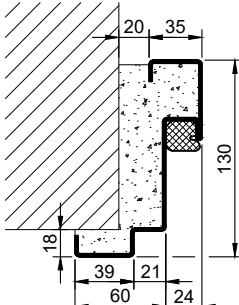
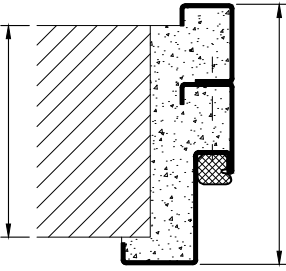
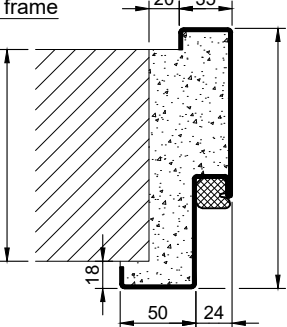
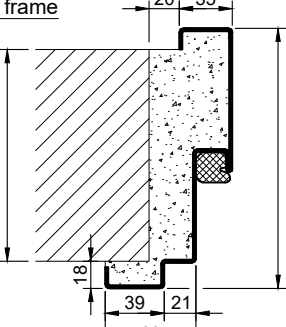
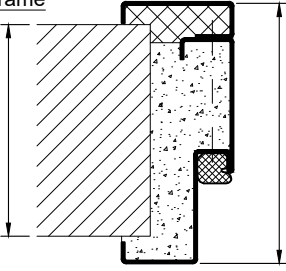
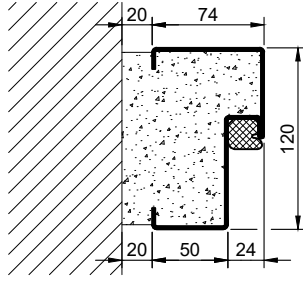

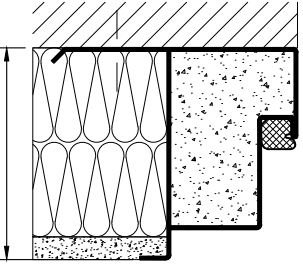
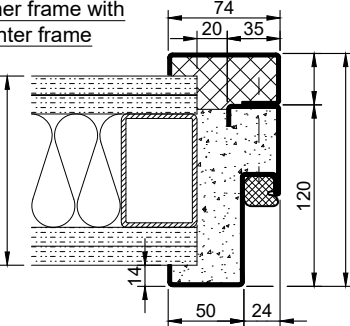
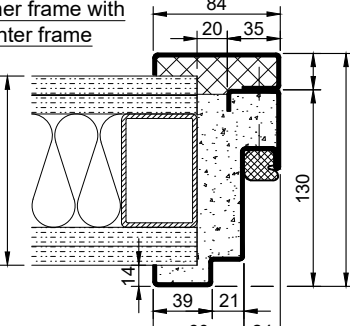
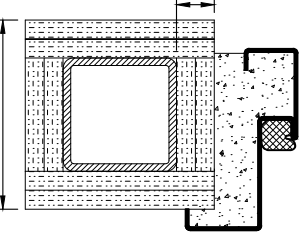
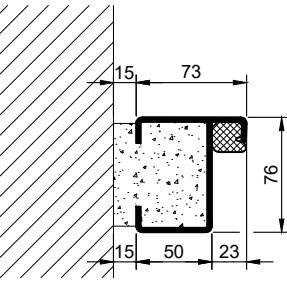
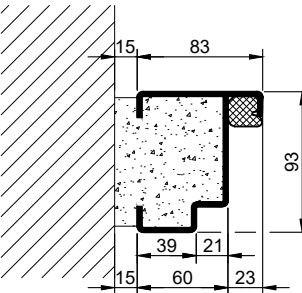
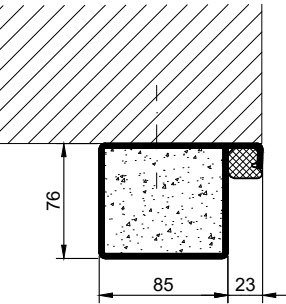
### SUPERIOR - Version



### Options



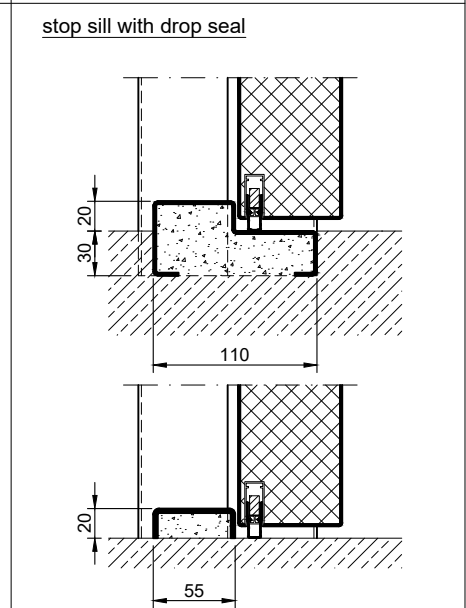
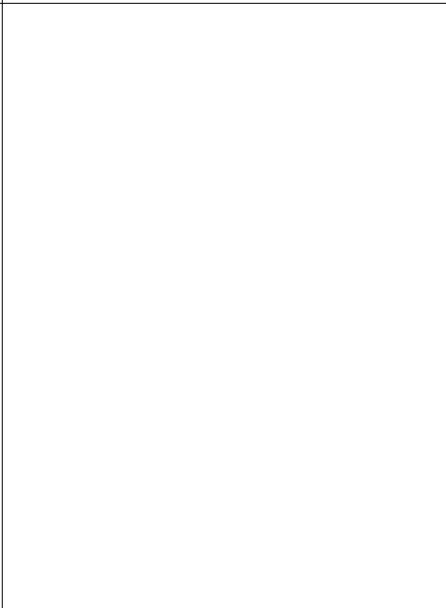
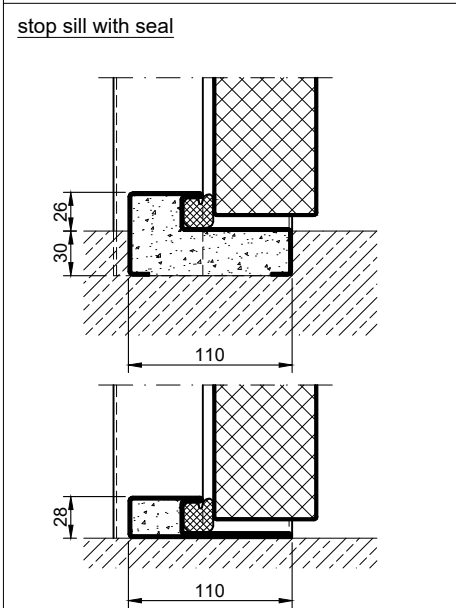
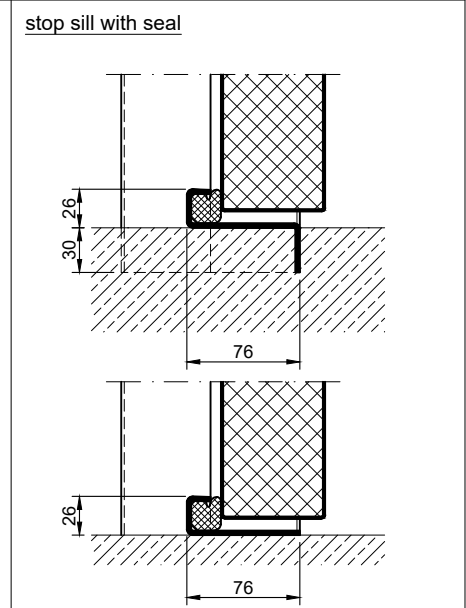
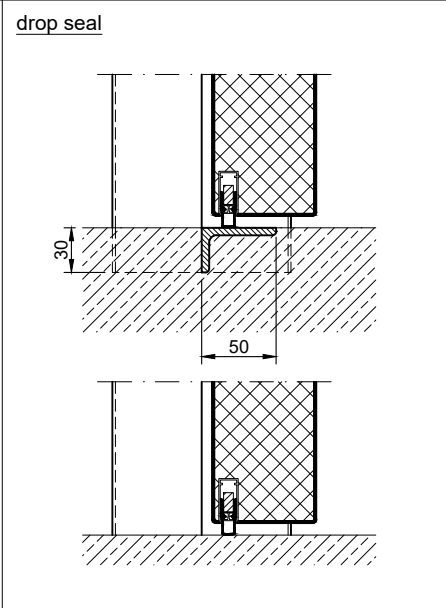
1.34.2\_PLANE LINE PL 602 LD3\_EN

Frames BASIC	Frames PREMIUM/SUPERIOR	Variants (illustration BASIC)
<p>corner frame</p> 	<p>corner frame</p> 	<p>corner frame with additional frame</p> 
<p>encasing frame</p> 	<p>encasing frame</p> 	<p>encasing frame with counter frame</p> 
<p>block frame</p> 	<p>block frame</p> 	<p>juttet block frame</p> 
<p>corner frame with counter frame</p> 	<p>corner frame with counter frame</p> 	<p>corner frame at support / pillar</p> 
<p>profile block frame</p> 	<p>profile block frame</p> 	<p>pre-wall frame</p> 

1.34.2. PLANE LINE PL 602 LD3\_EN

technical modifications reserved - edition 05/2024

### Thresholds



1.34.2\_PLANE LINE PL 602 LD3\_EN